

CERTIFICATE OF LOCATION OF GOVERNMENT CORNER

NORTH QUARTER Corner of Section 16, Township 107N, Range 39W

5th Principal Meridian, State of Minnesota, County of MURRAY

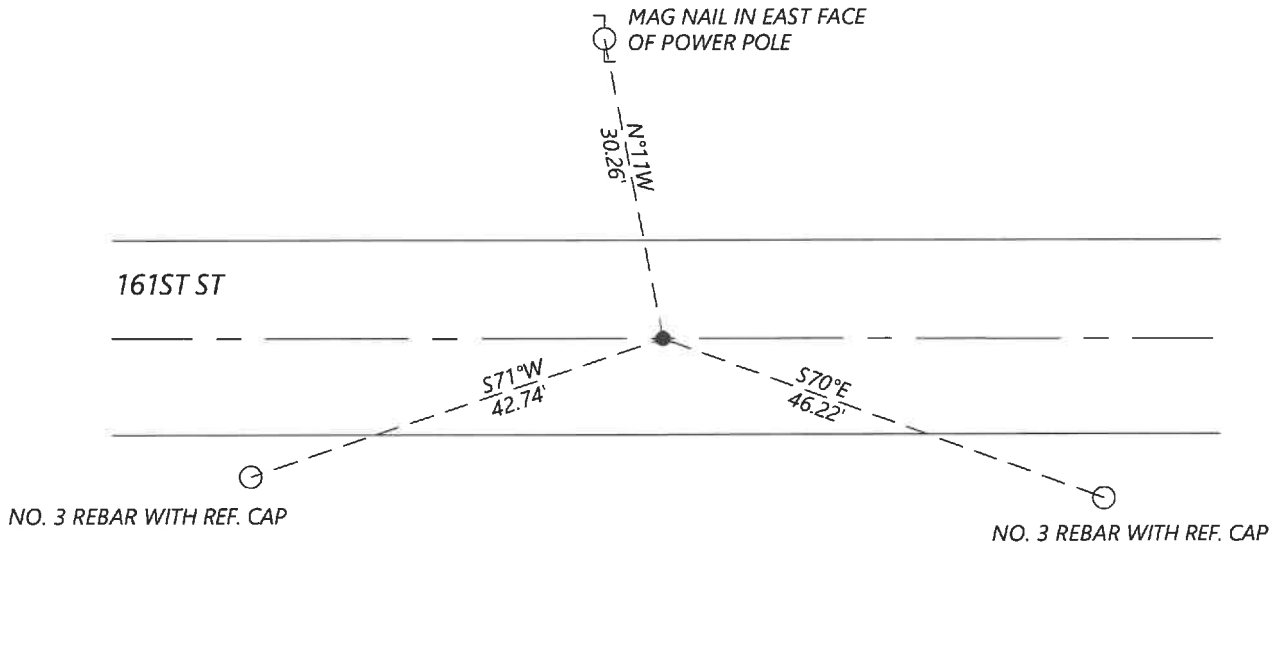
At the corner location shown on the sketch:

On 8/27/2020 found a NO. 5 REBAR WITH CAP LS 23008, 0.3FT BELOW GRADE
DATE

left monument as found lowered monument removed monument (explain)

On _____ placed a _____
DATE

SKETCH OF REFERENCE TIES



Statement of evidence for this corner location is on back of this page.

I hereby certify that this document was researched and prepared by me or under my direct supervision and that I am a licensed Land Surveyor under the laws of the State of Minnesota.

Signature [Signature]

Date 6/16/2021 License No. 45874

Title:

- Land Surveyor Professional Engineer
- County Surveyor County Engineer

OFFICE OF THE COUNTY RECORDER

County of Murray

I hereby certify that this document was filed in the Co.

Recorder's office at _____ M. on the _____ day of _____ A.D. 20 _____

County Recorder [Signature: Karen Brown]

by JUN 22 2021, Deputy

DOCUMENT NO. _____

Statement of Evidence:

North Quarter Corner of Section 16, Township 107 North, Range 39 West, 5th Principal Meridian, Murray County, Minnesota.

1861 July, GLO Notes: Set $\frac{1}{4}$ section post.

2019 December, A survey in Section 9 by Jesse Zieg shows that a capped rebar was found at the corner. He shows that a distance of 2652.72ft to the SE section corner and 2636.60ft to the SW section corner.

2020 September, Westwood Professional Services and found a rebar wit cap LS 23008 at the corner. The position fits with the 2019 survey data. I accepted the found monument location and set reference ties.

Analysis of the recovered data, field evidence and survey measurements, indicates that the monument found is the correct perpetuation of this corner. For additional information concerning this corner please contact Westwood Professional Services.